



[Home](#)  
[About our Firm](#)  
[Our Vision](#)  
[Project Approach](#)  
[Consulting](#)  
**[Portfolio](#)**  
[Contact Us](#)

# Holy Family Convent



## **Assessment of continuing usage of a historic facility**

A large convent complex that initially housed a large order of Nazareth Sisters currently constituted 50 members. The complex was established in 1907, had a chapel added in 1913, a second residence hall added in 1956, and a third residence hall in 1967.

The complex currently was oversized and was in non-compliance to life safety standards, violated the village building codes, lacked energy efficiency, and needed extensive building repairs.

David Zeunert & Associates presented four schemes that explored demolishing certain buildings, upgrading others and adding necessary new components.

This analysis entailed the following procedures:

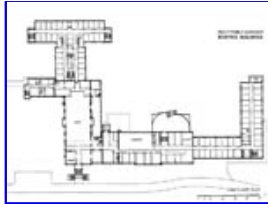
1. Procuring the building drawings from the village archives
2. Complete on-site examination
3. Collaboration with village building inspectors
4. Coordination with professional engineers on mechanical equipment
5. Environmental consultation on asbestos abatement
6. Contractor's examination and cost proposals

A fifth scheme illustrated a new design complex.

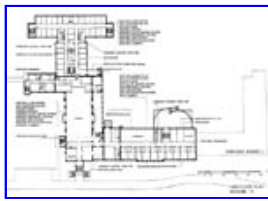
This report was required for the Sister's ruling order in Rome for this complex resolution.



*Existing site plan*



*Existing floor plan*



*Proposed floor plan*

A table with multiple columns and rows, likely containing a summary of data or analysis related to the project. The content is too small to read.

*Summary analysis*

---

 [Printable Format](#) (Adobe Reader required)

Copyright © David Zeunert & Associates. All Rights Reserved.